

SOFT START BOARD



- Allows soft charging of capacitors when starting
- Control signal isolated by optocoupler
- Works with 110V / 220V / 240V AC loads
- Current up to 20 A in continuous mode
- Network zero crossing
- Status indication LED
- It can also be used as a solid state relay.
- 60 mm x 60 mm.

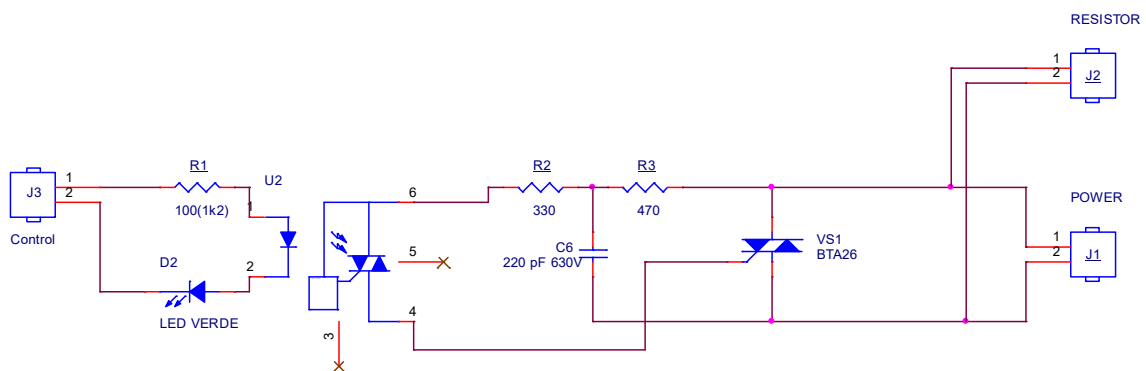


Fig.1. Soft Start Board Schematics.

The triac VS1 has its body insulated, so it can be screwed to the heatsink without any insulation.

The value of R1 must be according to the control voltage.

CONTROL VOLTAGE	R1, Ohms
3.3V	100 (do not use LED)
5V	220
8...15V	1200
24...33V	3000

To ensure a smooth start of the capacitors of the power rectifier filter present in the equipment, it is necessary to connect a power resistor to connector J2, and excite the triac VS1 with a delay of up to two seconds, so that the initial load has Place through the starting resistor.

The constant I2t of the resistor must be greater than that required by the circuit that is supplied. Its power and resistance depend on the nominal power of the system. The resistance is usually chosen between 10 and 33 Ohms, and the power between 10W and 50W, for equipment powers less than 4 KW.

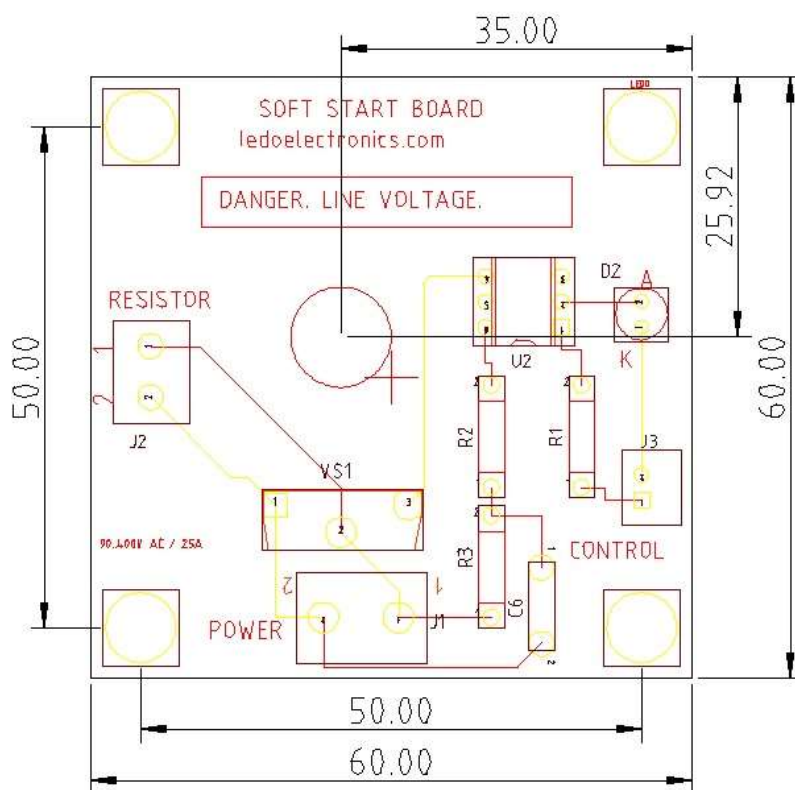


Fig.2. Board outline.