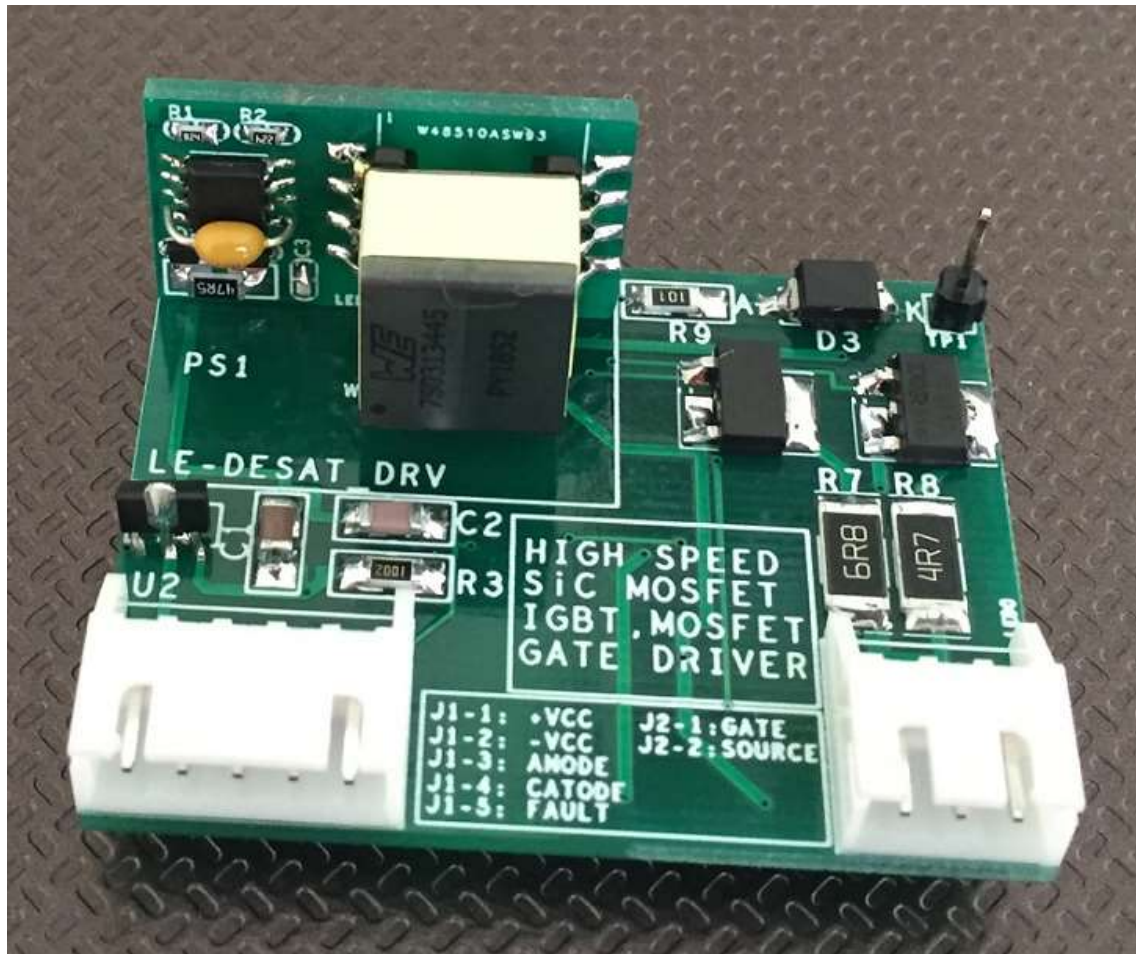


IGBT GATE DRIVER WITH DESAT PROTECTION



- Supply voltage Vcc 10V... 17 V DC
- Rated current input signal: 8 mA
- Optimum operation between DC and 80 kHz
- Maximum working frequency: 300 KHz
- Suitable for controlling large Mosfets / IGBTs
- Compatible with Silicon Carbide Mosfets (SiC MOSFETs)
- Power IGBT Desat Protection
- UVLO protection
- Vertical mounting to reduce space.
- Supports pulses with PWM modulation. Duty cycle between 0 and 100%
- Non-inverting amplifier
- Fully insulated driver
- Short circuit or overload alarm

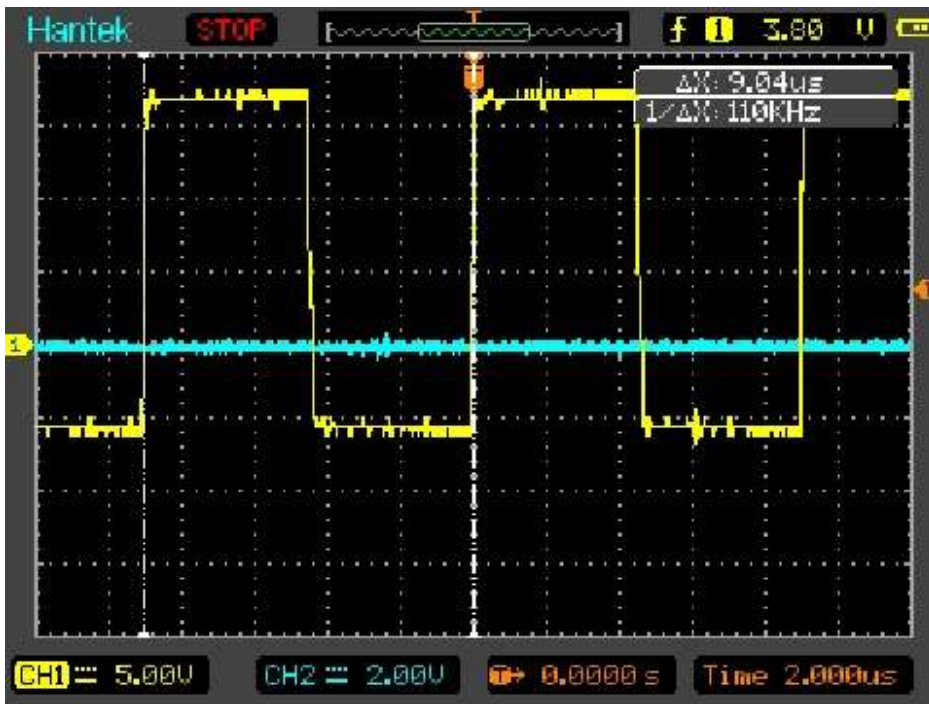


Fig.2. Shape of the output wave at the SiC MOSFET M0040120D gate at a frequency of 110 kHz.

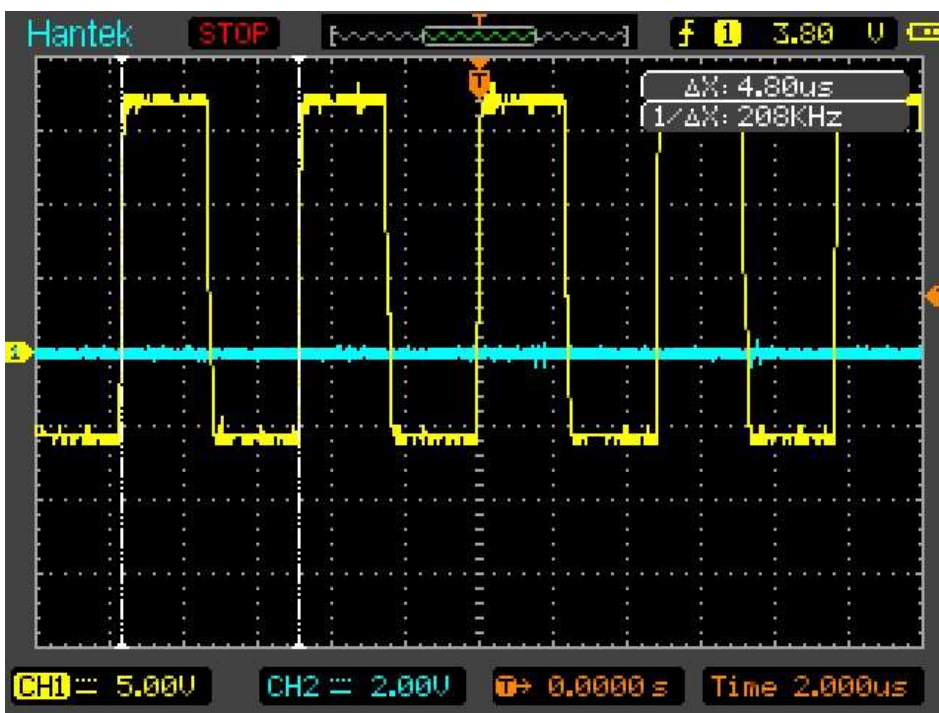


Fig.3. Shape of the output wave at the SiC MOSFET M0040120D gate at a frequency of 208 kHz.

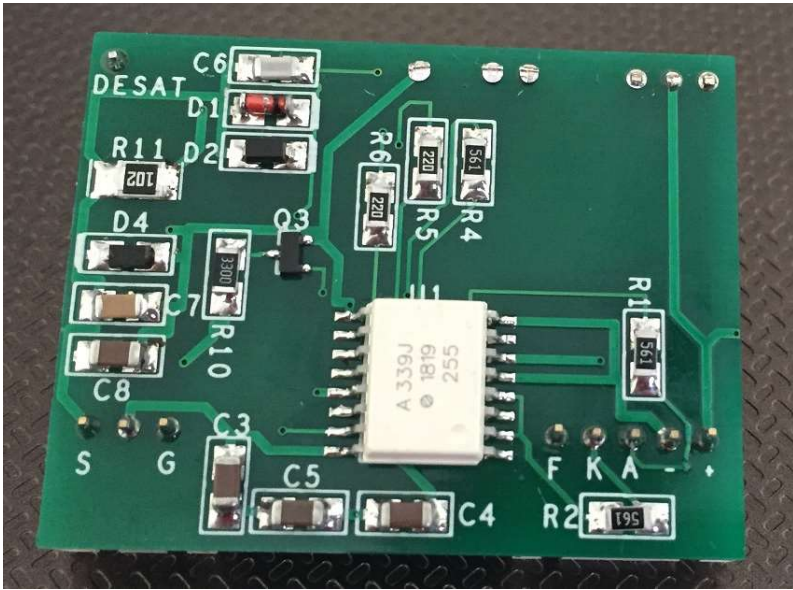


Fig.4. Driver back side.

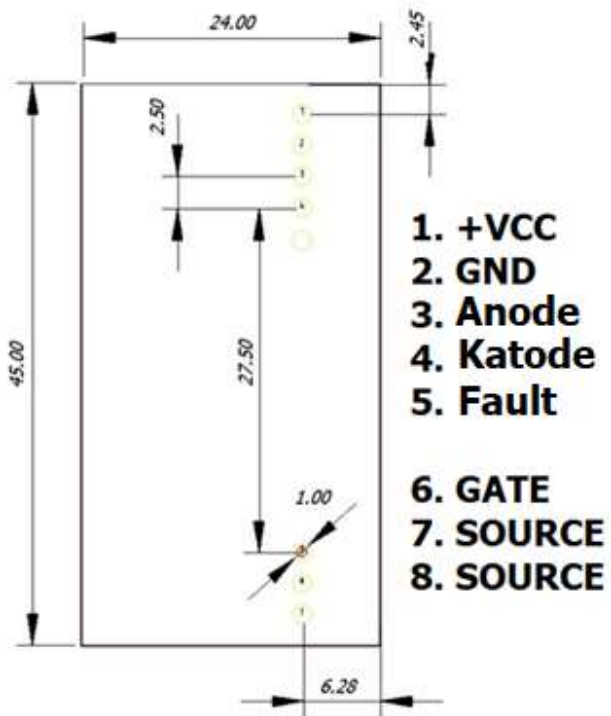


Fig.5. PCB Footprint.